

# 5V: Sekundarna građa stabla i anatomska građa lista

## PREPARATI:

- 1) Sekundarna građa stabla (lipa, *Tilia* sp.)
- 2) Anatomska građa lista umjerenih staništa (bukva, *Fagus sylvatica*)
- 3) Anatomska građa lista sušnih staništa (lijander, *Nerium oleander*)

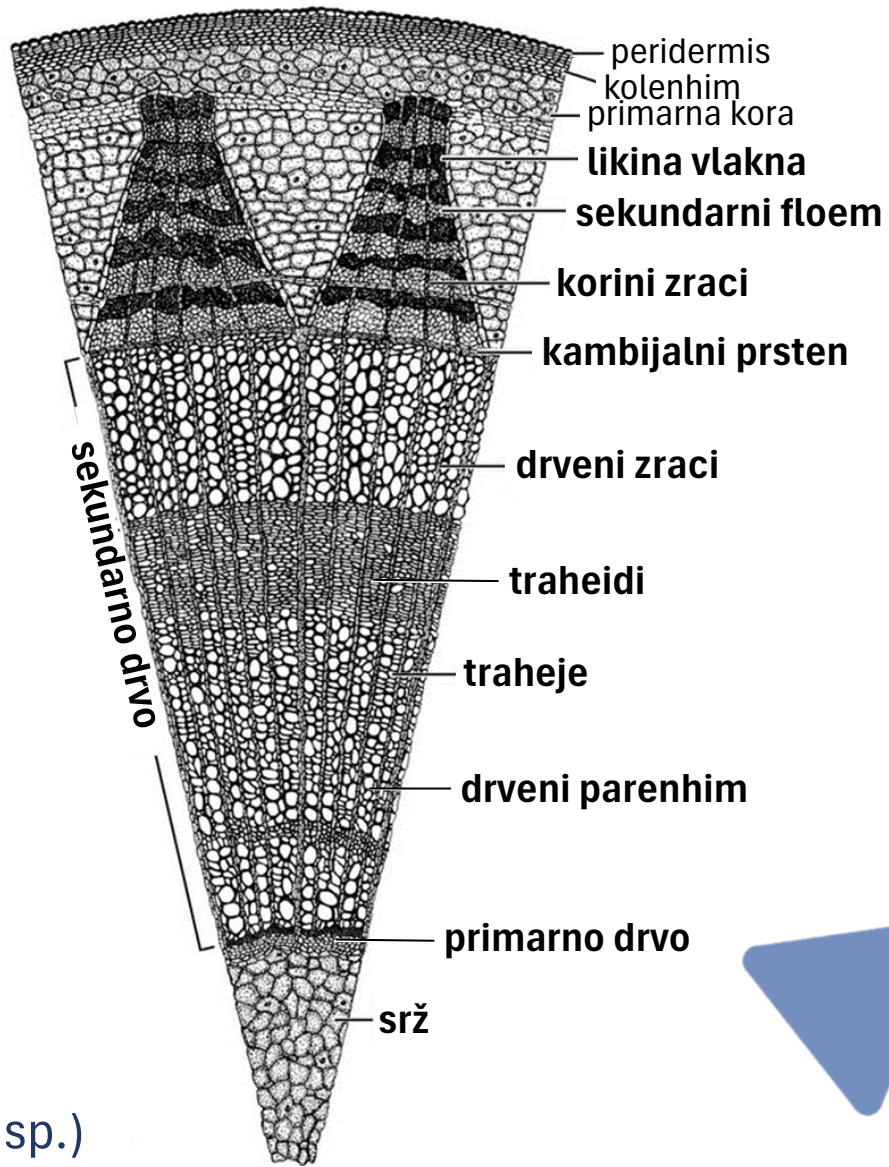
Mijat Božović

**BOTANIKA**

*materijal za laboratorijske vježbe*

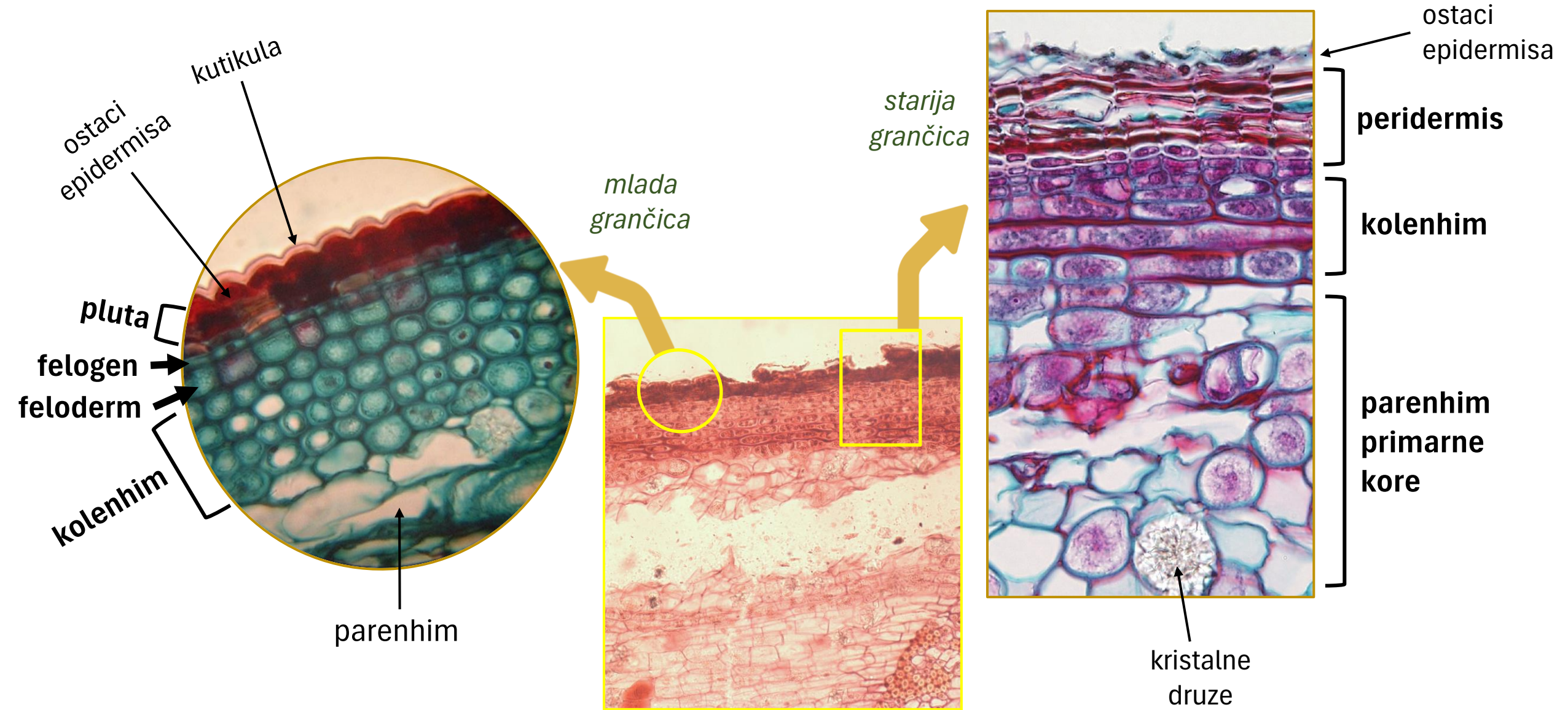


# 1) Sekundarna građa stabla

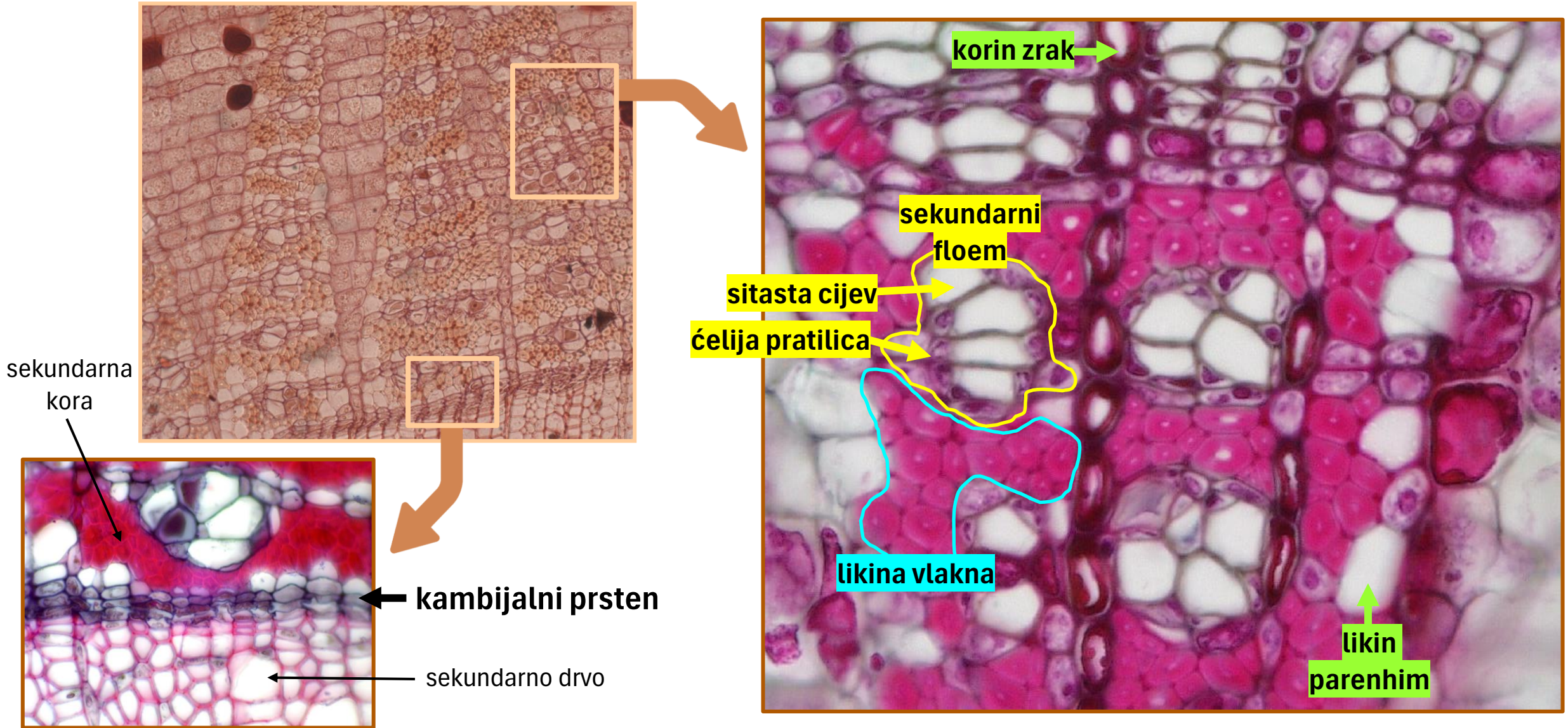


lipa  
(*Tilia* sp.)

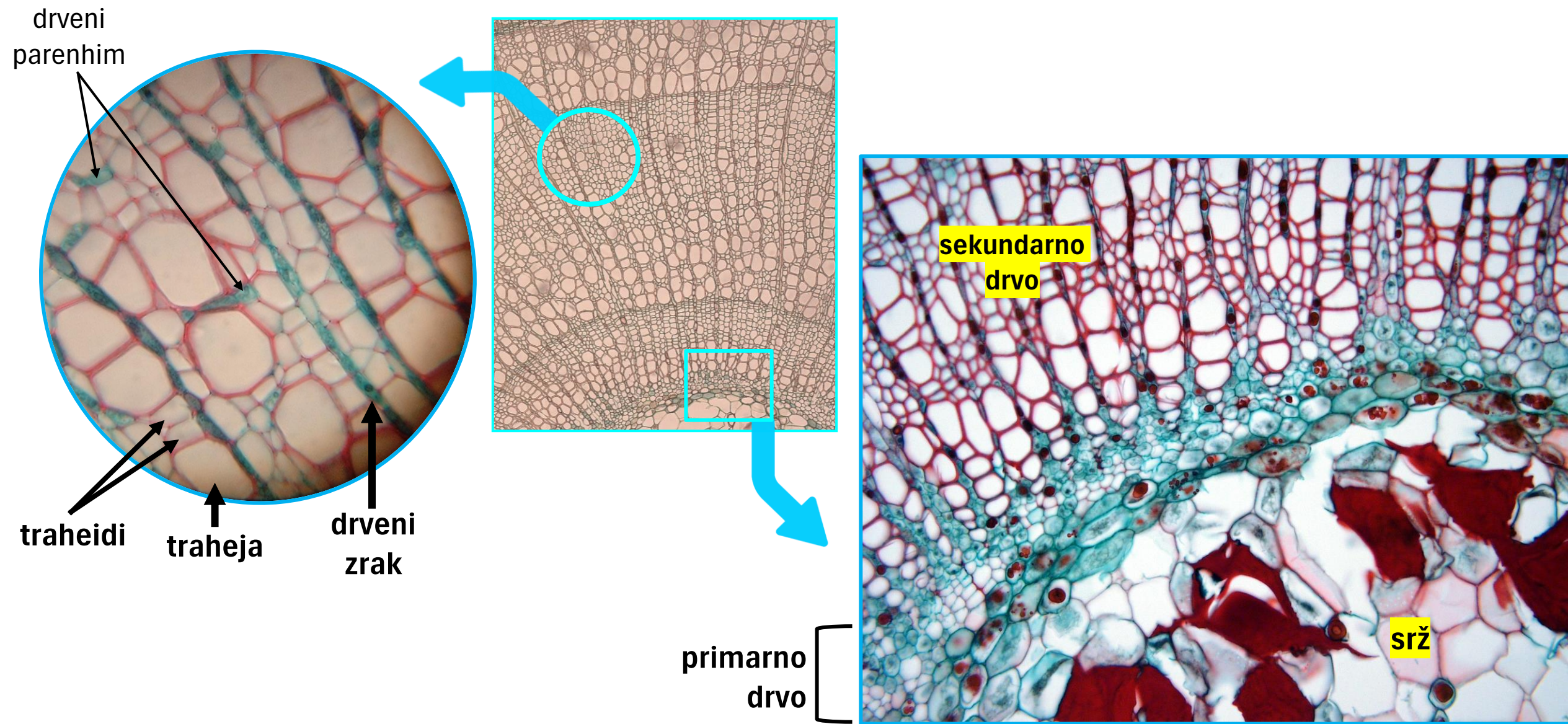
# Peridermis i primarna kora



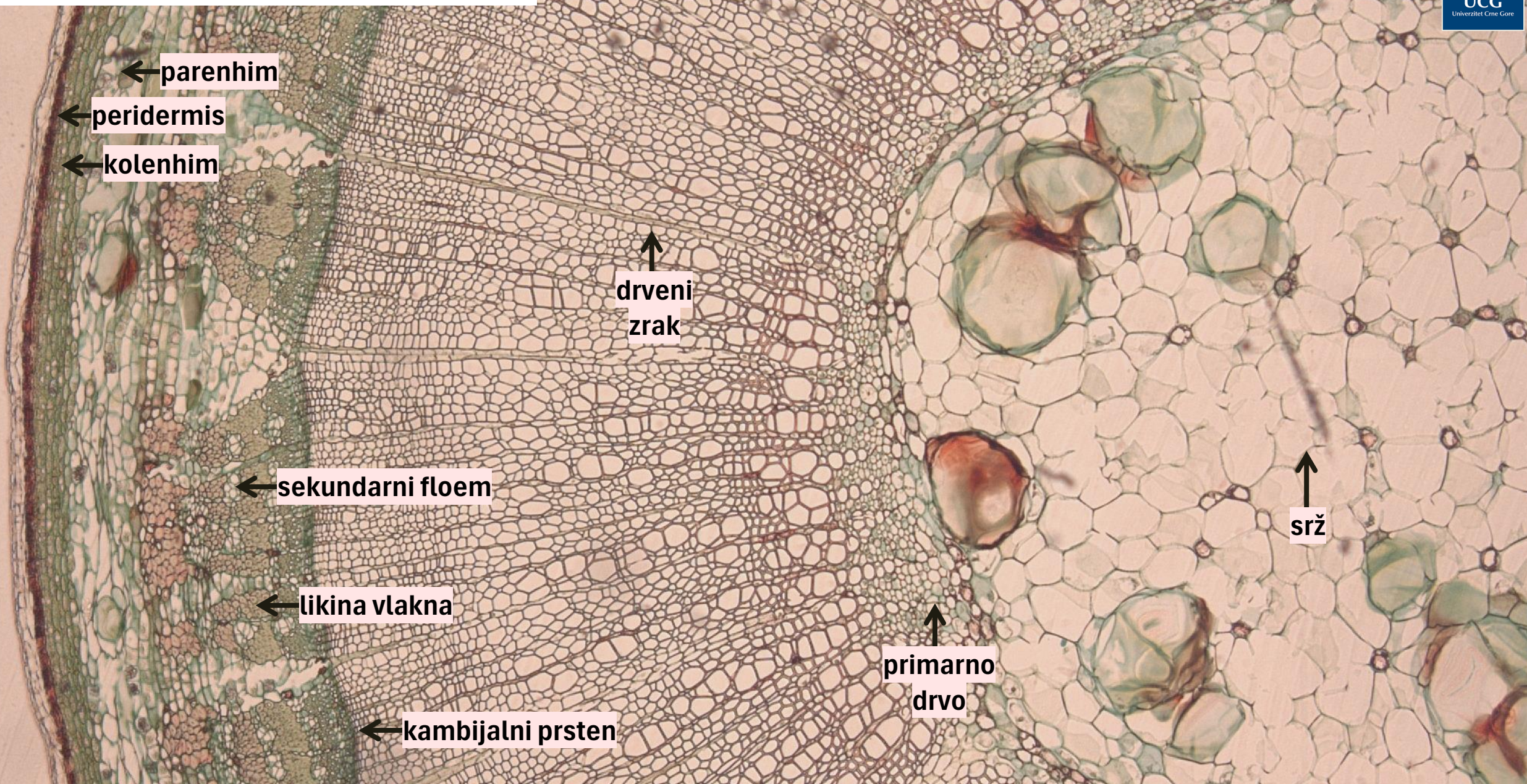
# Sekundarna kora i kambijalni prsten



# Srž, primarno i sekundarno drvo



# presjek kroz jednogodišnju grančicu lipe



← parenhim

← peridermis

← kolenhim

↑  
drveni  
zrak

← sekundarni floem

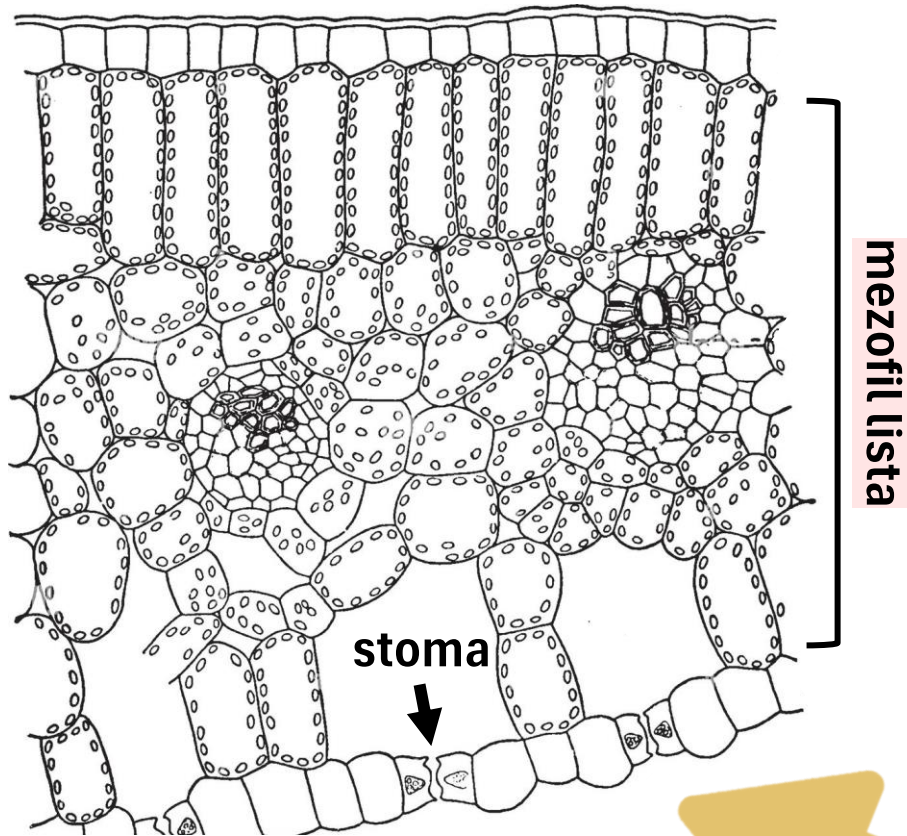
← likina vlakna

← kambijalni prsten

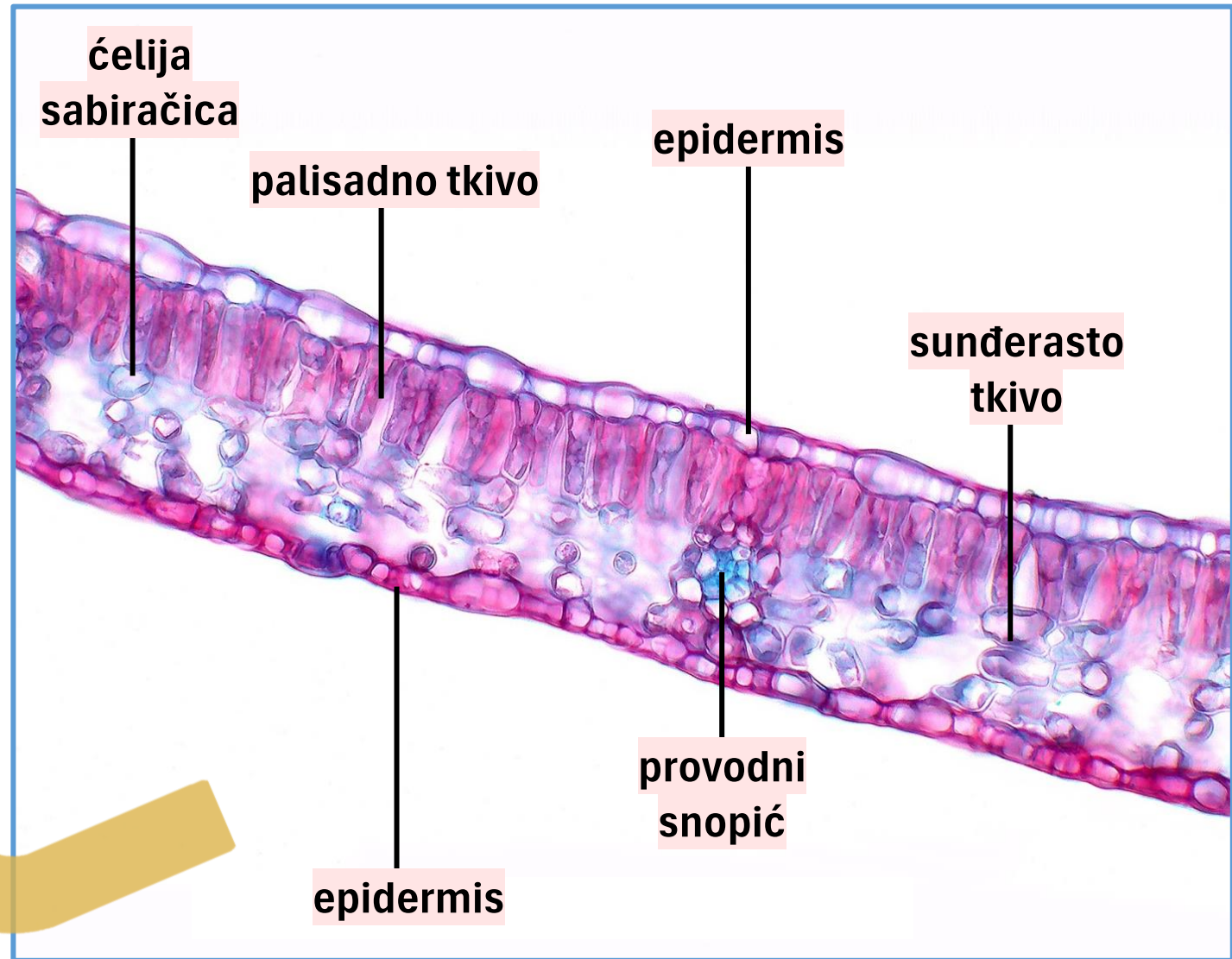
↑  
primarno  
drvo

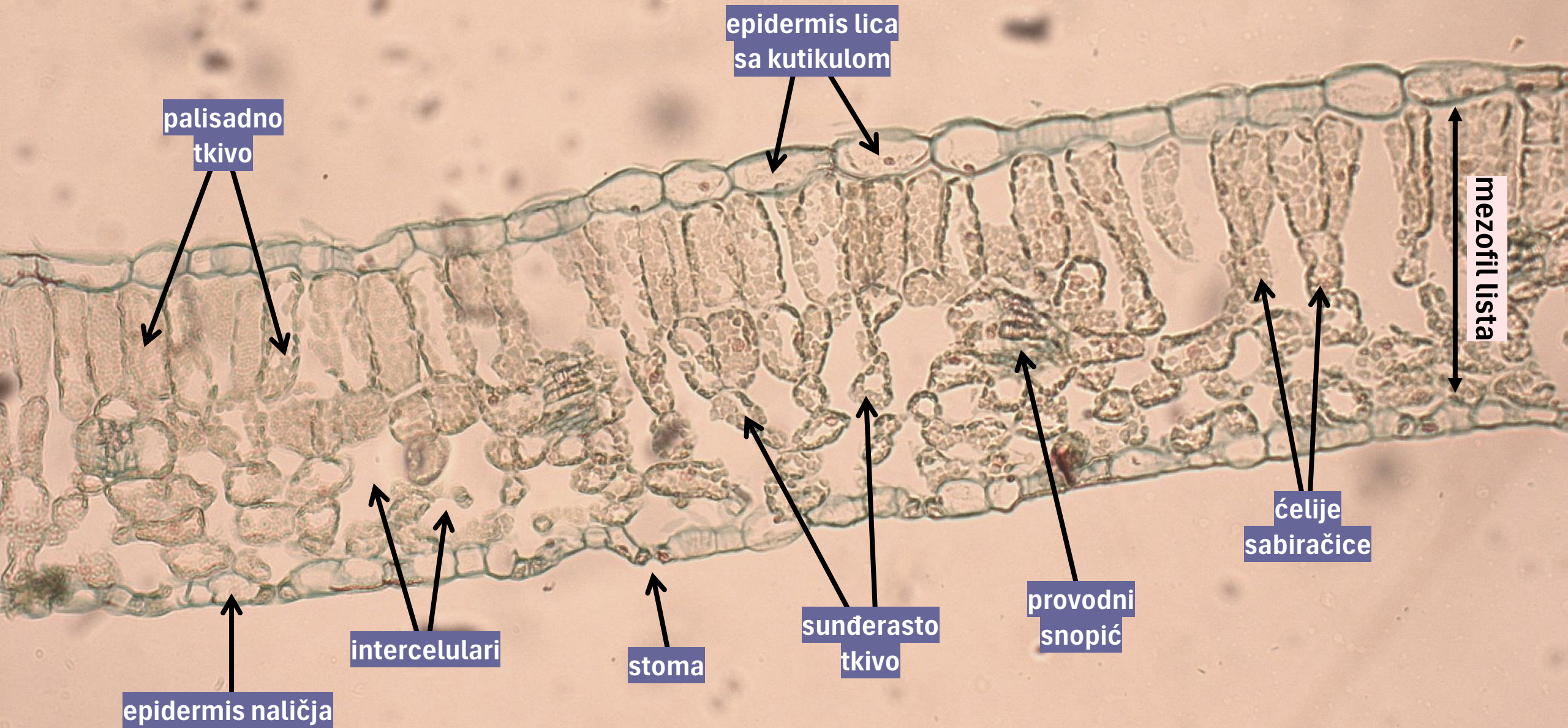
↑  
srž

## 2) Anatomska građa lista umjerenih staništa



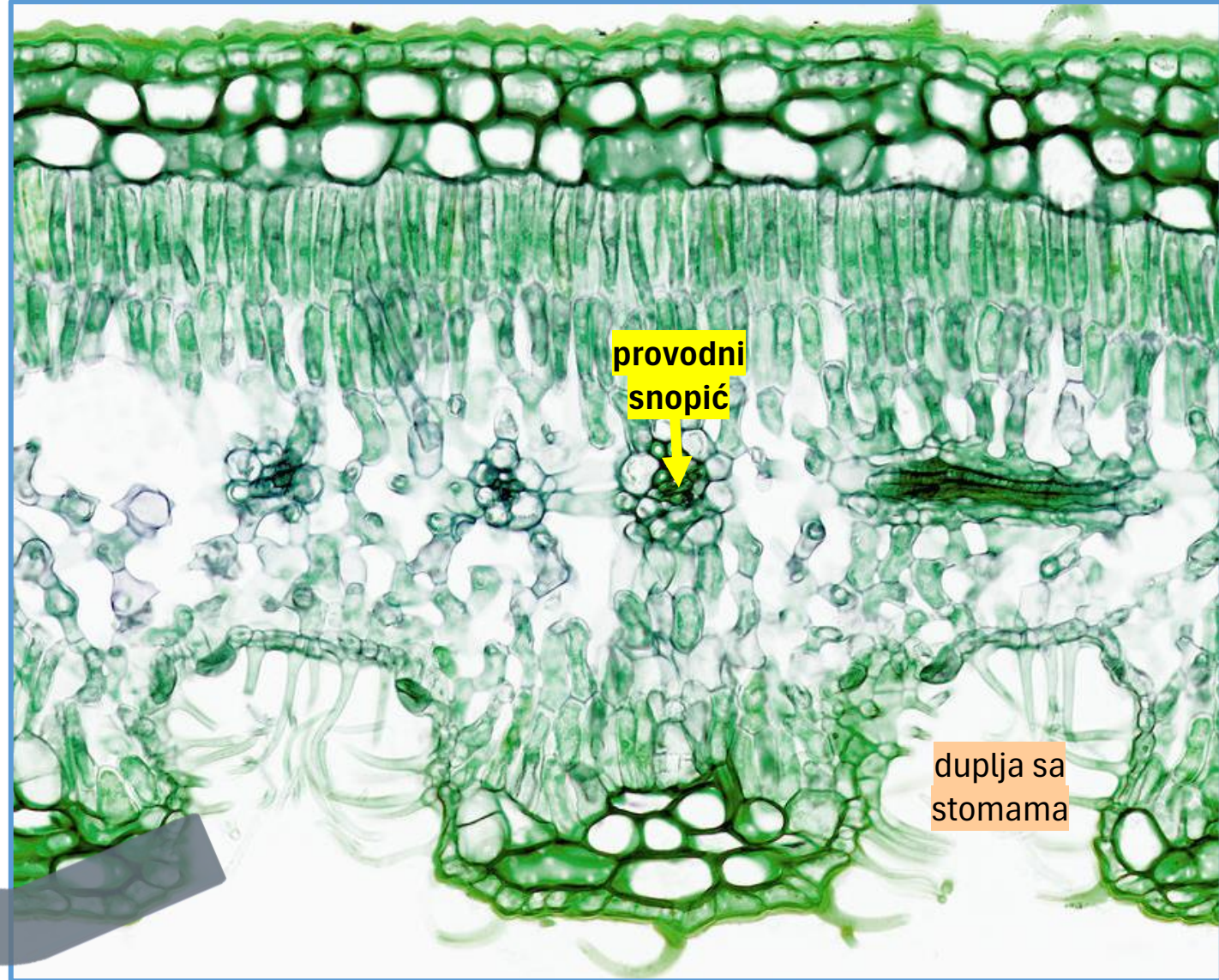
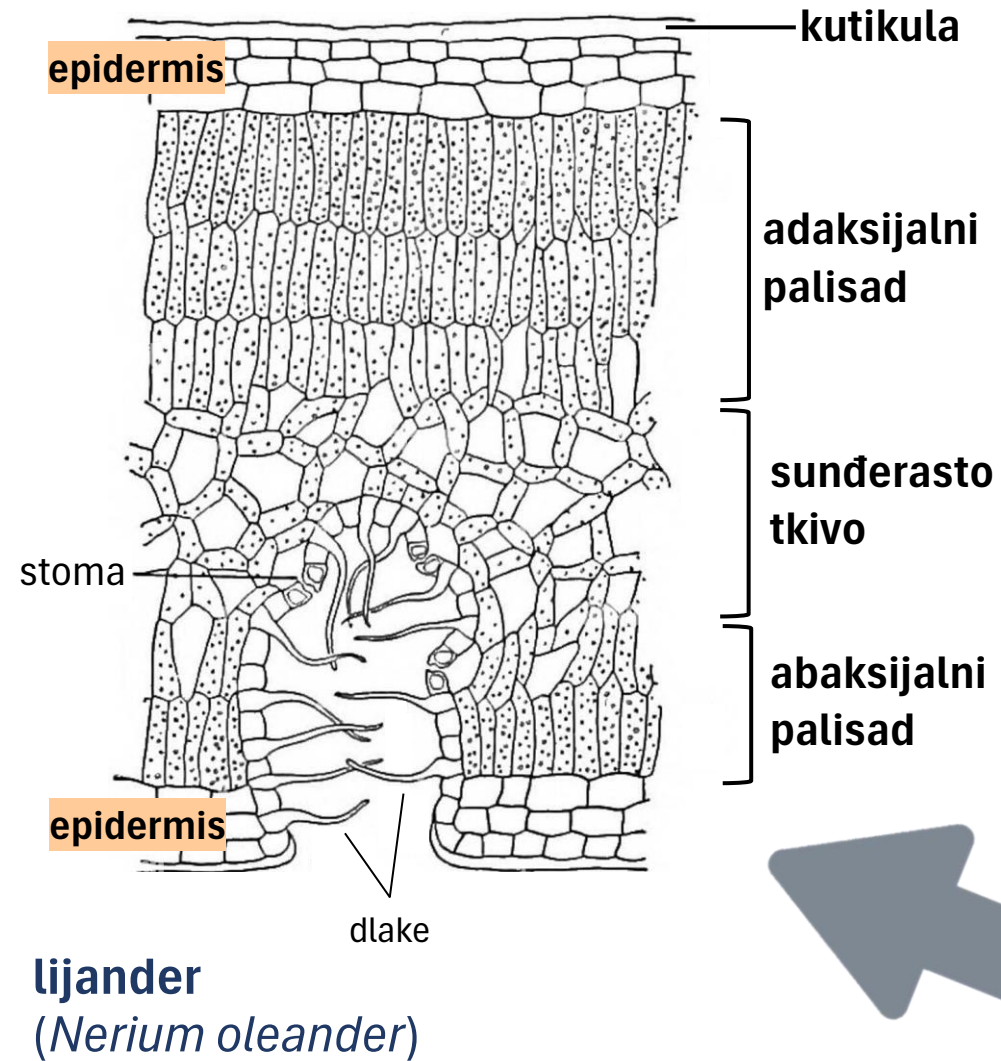
**bukva**  
(*Fagus sylvatica*)



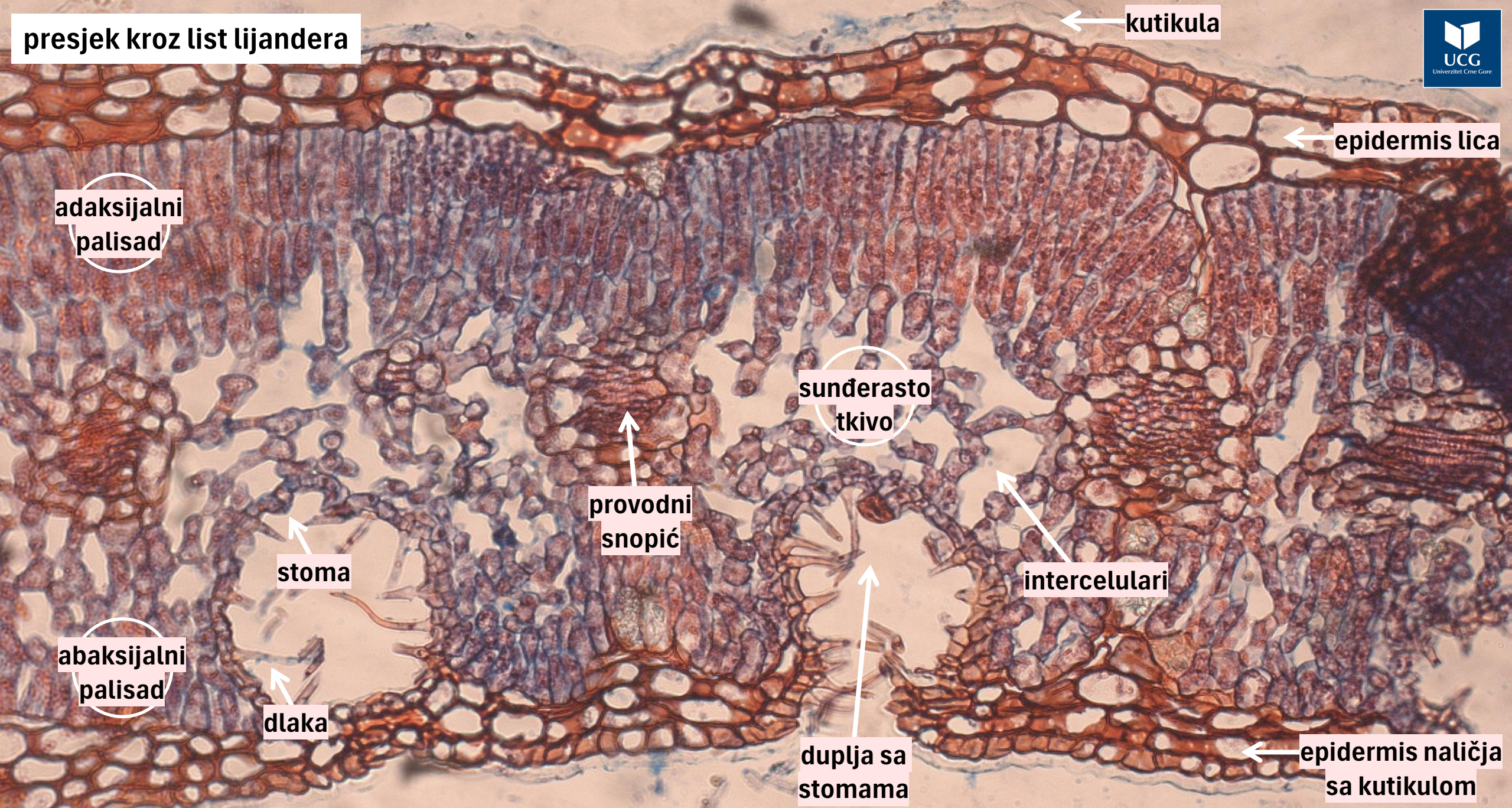




# 3) Anatomna građa lista sušnih staništa



presjek kroz list lijandera



kutikula

epidermis lica

adaksijalni palisad

sunderasto tkivo

provodni snopić

intercelulari

stoma

abaksijalni palisad

dlaka

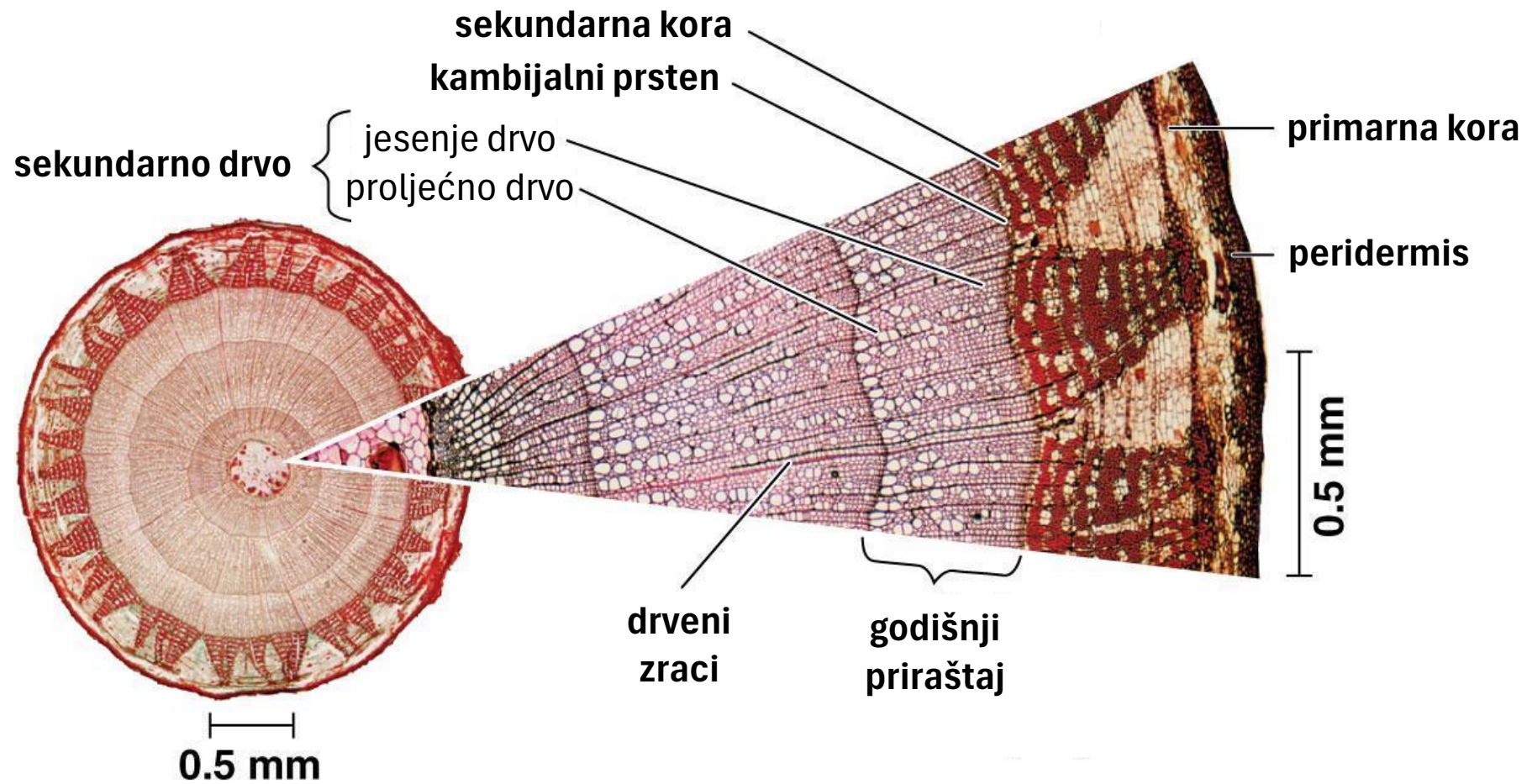
duplja sa stomama

epidermis naličja sa kutikulom

## **DODATAK:**

- 1) Sekundarna građa stabla lipe: osnovne histološke zone**
- 2) Model osnovne građe lista**

# 1) Sekundarna građa stabla lipe: osnovne histološke zone



## 2) Model osnovne građe lista

